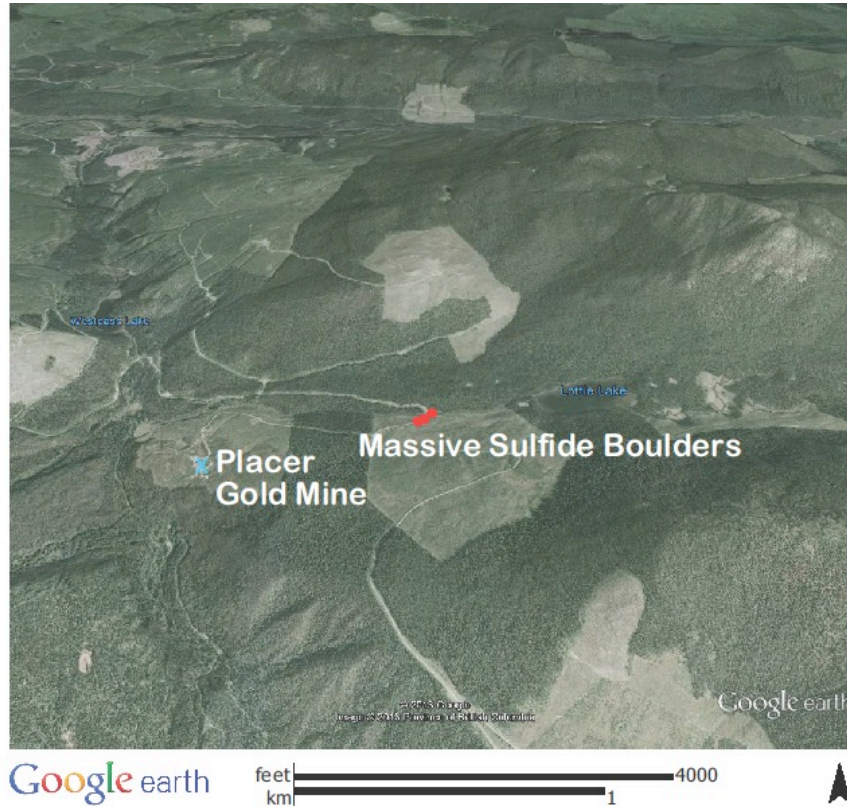


Hedge Hog Project

Cariboo Mining Division, BC



Massive Base Metal Sulfides
and
Lode Gold

Eastfield Resources Ltd.

A Massive Sulfide and Gold Project Located in Central BC

Target best described as an Cyprus Type **Massive Sulfide**

Commodities include:

Copper

Cobalt

Silver

and

Lode Gold

Local placer gold production from Barkerville area creeks exceed 4.0 million ounces while hard rock gold production exceeds 1.2 million ounces.

Neighbours

The southern edge of the Hedge Hog claim is 13 kilometers north of the Mosquito Creek Gold mine which is the centre of activity for the Cariboo Gold Project owned by Barkerville Gold Mines Limited

(Barkerville Gold Mines is 33% owned by Osisko Gold Royalties and 16% by Osisko Mining)

Hedge Hog claims are essentially contiguous with the Cariboo Gold Project with the entire area in between owned by Barkerville Gold Mines.



Infrastructure

- Includes:
- Roads
 - Power
 - Rail (nearby)

Eastfield Resources Ltd.



Mineralized
Boulder
(Lottie Area)

Copper
Cobalt
Silver

The Deal

Surge Exploration Inc. may earn a 60% interest in the 2,785 hectare (6,882 acre) Hedge Hog property from Eastfield Resources Ltd. who has owned the project since 2013.

Terms:

Cash payments totalling \$350,000, share issuances valued at \$150,000 and work commitments of \$2,500,000 over a 5 year period.

A \$100,000 Exploration expenditure is required in the first year.

History

1998: An angular mineralized boulder was discovered grading 24.3% copper and 19.3 g/t silver.

1999-2001: Eureka Resources Inc and Hudson Bay Exploration and Development completed soil surveys, airborne and ground geophysical surveys, excavator trenching and 6 diamond drill holes.

2002: Hudson Bay Exploration and Development dropped out. Eureka Resources continued to hold the property until 2013.

2013: Eastfield Resources staked the area (Hedge Hog claims)

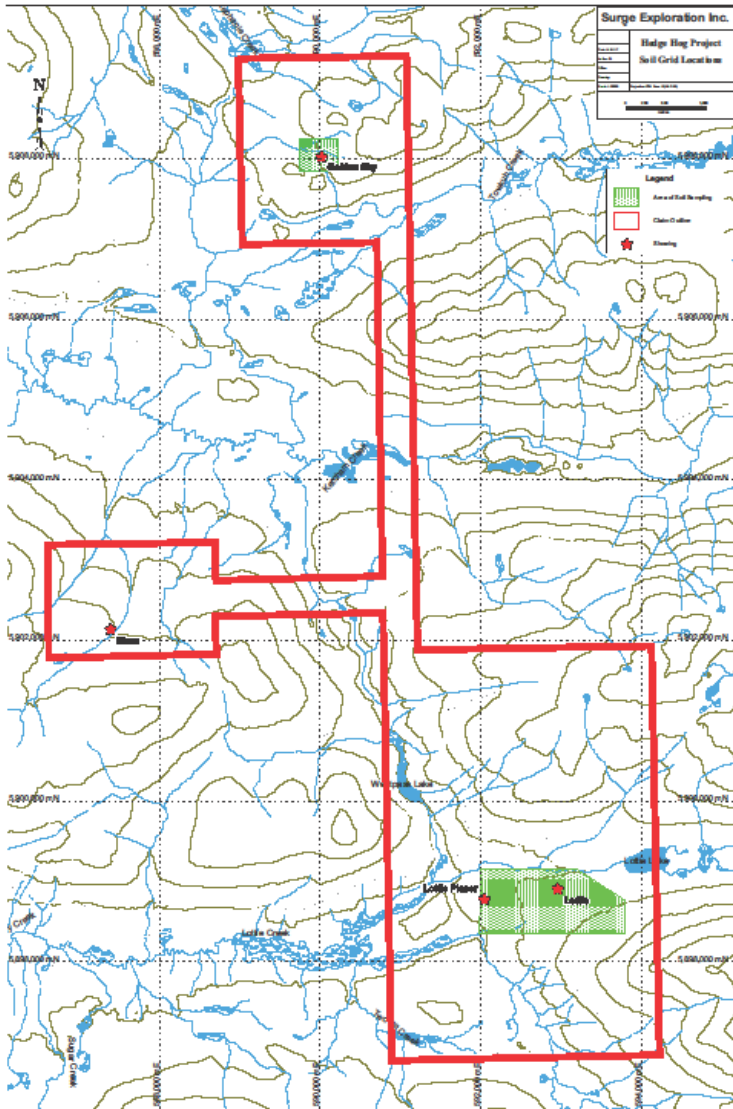
Excavator Trench Results

(Hudson Bay Exploration and Development, 2001)

Sampl. #	Type	Copper %	Silver ppm	Cobalt ppm	Tin ppm
14130	Copper rich	9.25	8,960	203	108
14131	Copper rich	8.34	9,112	197	129
14132	Copper rich	10.35	11,839	185	134
14148	Copper rich	7.03	8,442	86	104
BCGSB	Copper rich	4.59	6,000	98	-
10083	Massive pyrite	0.53	688	265	20
14134	Massive pyrite	0.10	525	1,345	5

Work Completed by Eastfield (2013-2015)

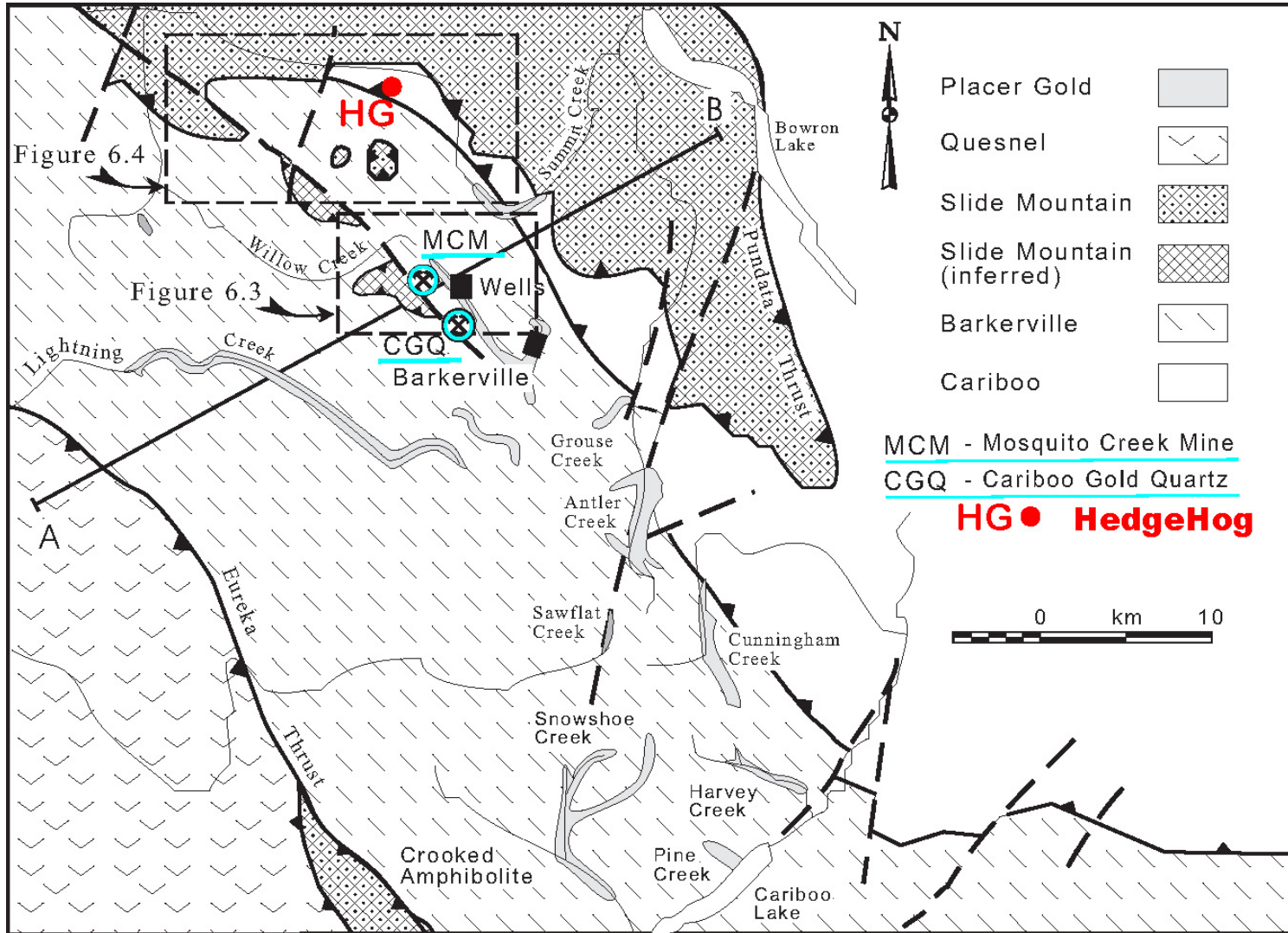
- collection and analysis of 655 soil, rock or silt samples.
- 4.7 kilometers of reconnaissance induced polarization survey.
- 48 excavator test pits.
- discovery of mineralization at Golden Sky with outcrop grabs returning 1.51 g/t gold, 1.37% zinc, 0.48% lead, 1,203 ppm arsenic and 1,313 ppm antimony.
- discovery of mineralized pyritic shale in the vicinity of the Lottie placer mine returning 0.80 g/t gold and 550 ppm arsenic.



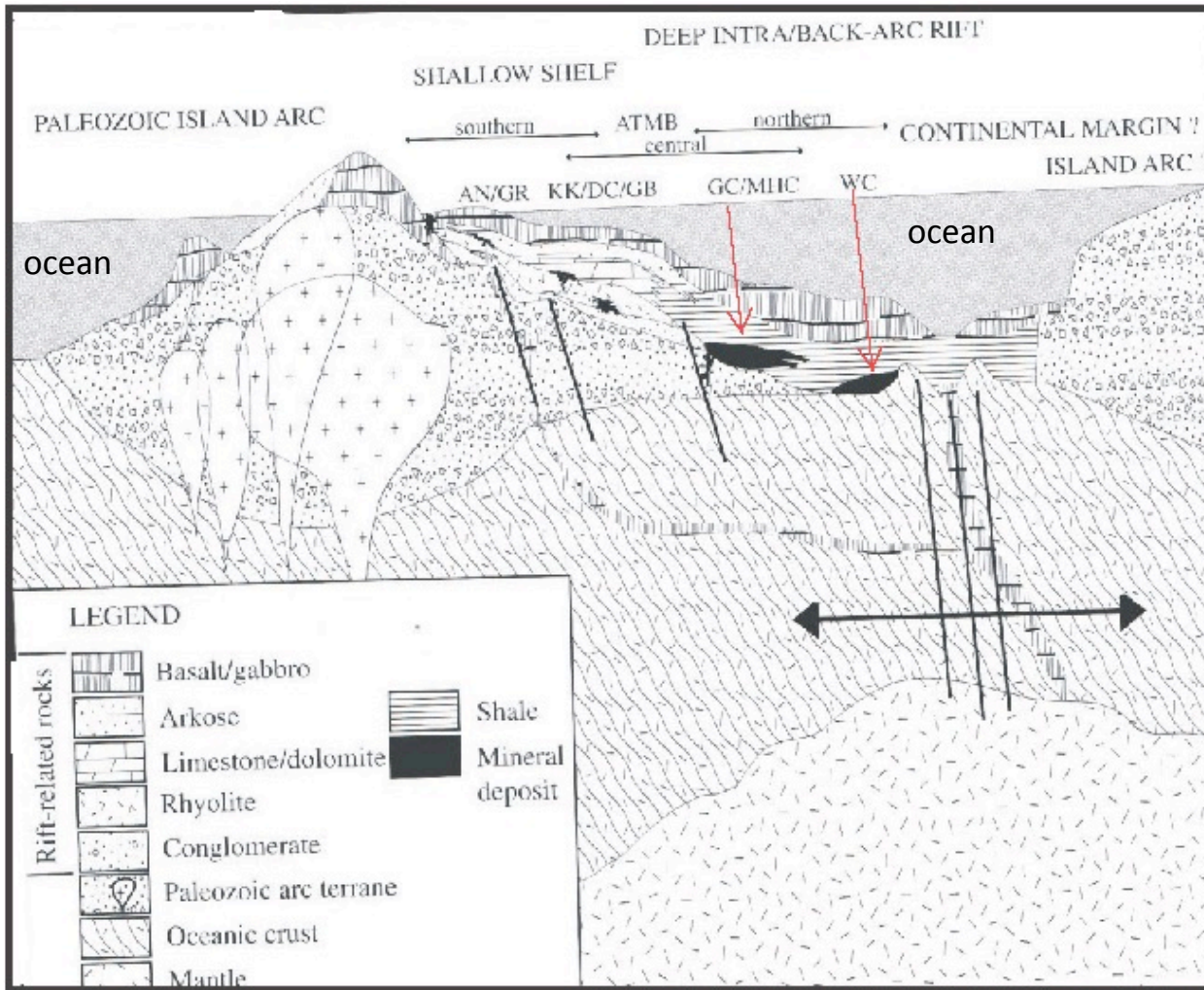
**Claim Outline
and Area of work
in 2013, 2014 and
2015**

Most of claim
unexplored

Regional Geology



Geological Model Analogue



After Taylor et Al, Economic Geology, Jan/Feb, 2008

WC: Windy Craggy
GC: Greens Creek

Model Analogues

Chu Chua, BC, 2.5 million Tonnes @ 2.0%
Copper, 9.4g/t Silver, 0.40% Zinc and
considerable accessory Cobalt

Windy Craggy, BC, 279.0 million Tonnes @
1.4% Copper, 0.07% Cobalt, 3.8g/t Silver,
0.20 g/t Gold

Greens Creek Alaska, 7.5 million tonnes @
8.1% Zinc, 3.0% Lead, 371.9g/t Silver, 0.10 g/
t Gold, in production

Barkerville, BC, approx 2.6 million tonnes @
15 g/t Gold, historical production

Searching for the Mother Lode



Hedge Hog
2015